

# Welcome to Reception!

Miss Dandy (class teacher/EYFS Lead)

Mrs. Dhanak (class teacher)

Mrs. Love (class teacher/Phonics Lead)



What is a typical day in Reception?



# What is a typical day in Reception?

- There is NO typical day!
- Working from the children's interests, we aim to create purposeful and meaningful experiences in the classroom. We DO have our Literacy and Maths lessons, as well as daily Phonics and Reading, but the focus is on developing the children's knowledge, LANGUAGE, understanding and skills through play and experience.
- The team plan and deliver play that takes into account every child's needs and interests.



**Cuban crocodile**  
*Crocodylus rhombifer*

ENDANGERED



This crocodile can be found only in the Zapata swamp in southwestern Cuba.

The Cuban crocodile spends more time on land than others do. When walking on land, it usually lifts its belly off the ground. Its strong hind limbs power it along when racing over short distances.

**SIZE** 3.5 m (11.5 ft) long  
**DIET** Fish and small mammals  
**HABITAT** Freshwater swamps  
**DISTRIBUTION** Cuba

Teeth are pointed and sharp

**Gharial**  
*Gavialis*

ENDANGERED



Long, narrow snout

One of the largest members of the crocodile family, the gharial spends most of its life in water. It barely walks on land, so it "belly slides" on the ground. Its long, thin snout has interlocking teeth and is ideal for holding struggling prey.

Nostrils housed in bulbous outgrowth

**SIZE** 7 m (23 ft) long  
**DIET** Mainly fish, also birds or carrion  
**HABITAT** Slow-moving backwaters of rivers  
**DISTRIBUTION** Northern part of the Indian subcontinent







What do  
children  
learn in  
Reception?



# 7 areas of learning and development.

The 3 prime areas are those most essential:

- ★ communication and language
- ★ physical development
- ★ personal, social and emotional development

The 3 prime areas will help them to develop skills in 4 specific areas:

- ★ literacy
- ★ mathematics
- ★ understanding the world
- ★ expressive arts and design





# School Readiness - A mission possible

Newham London



Watch on  YouTube



# Phonics/Early Reading

**English Hubs**

Myland English Hub

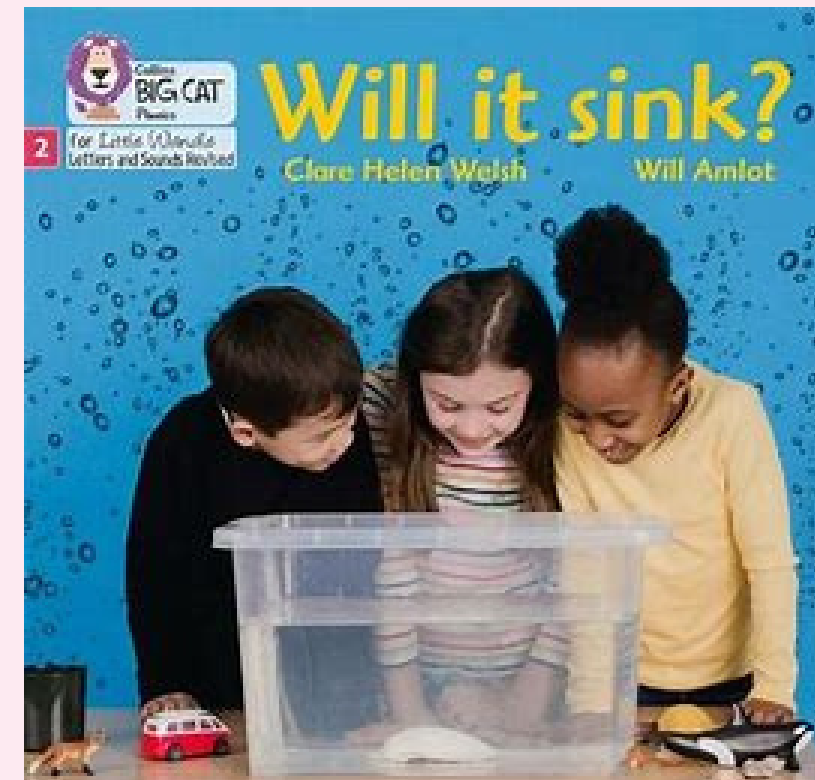
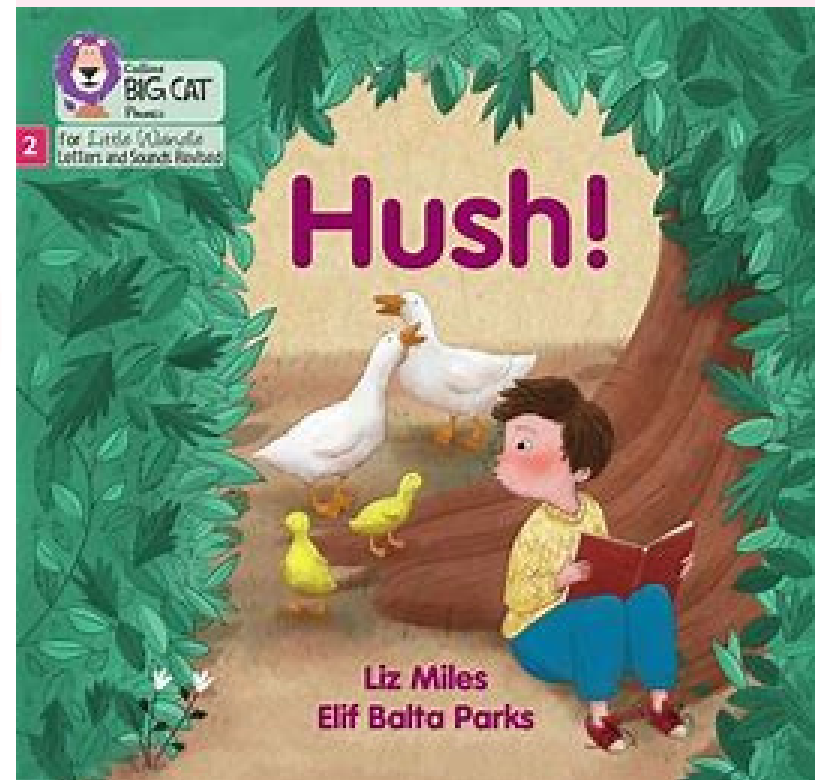
We're teaching  
every child to  
read with



Little Wandle  
**LETTERS AND  
SOUNDS**  
\*\*\*  
**REVISED**

TM

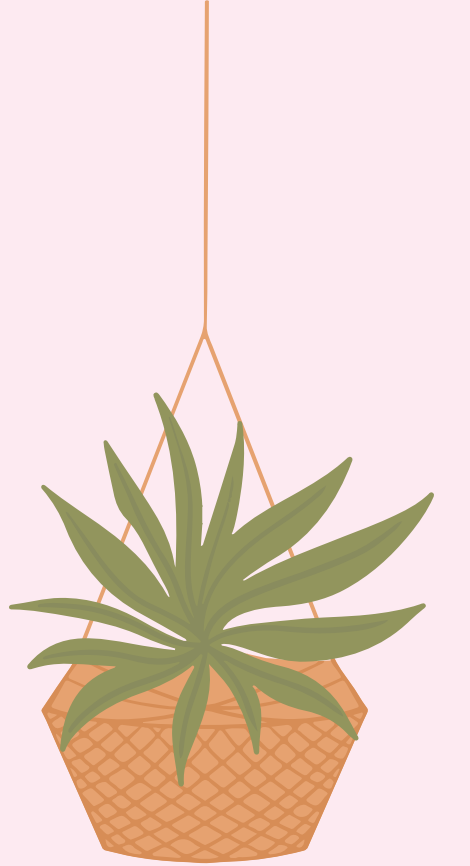
A complete SSP validated by  
the Department for Education



<https://www.youtube.com/watch?v=IL5YUCPyC5I>

# Home Journals

- As well as recording achievements in our whole class floor books, the children can record what they get up to at home in their 'home journals'. These are the red books available for you to take home tonight.



- This book is for any 'WOW' moments you experience at home; photos of trips and experiences, notes of what your child says or reads... anything you want recorded!

- They are a great way to encourage children to connect their lives in both home and school and also as a point of pride – a way of sharing what they are making great progress in!.

These books will be kept in book bags and shared/celebrated in class on a regular basis



# General Information

**MYLAND SCHOOL**

## Myland Community Primary School

Home About Us School Information Learning Parents News & Events Contact Us

Useful Links

NEW ENTRANTS SEPTEMBER 2026

Current Menus

School Uniform

Term Dates

PTA

Useful Links

HOME » PARENTS » NEW ENTRANTS SEPTEMBER 2026

# New Entrants September 2026

### In This Section

→ New Entrants September 2026

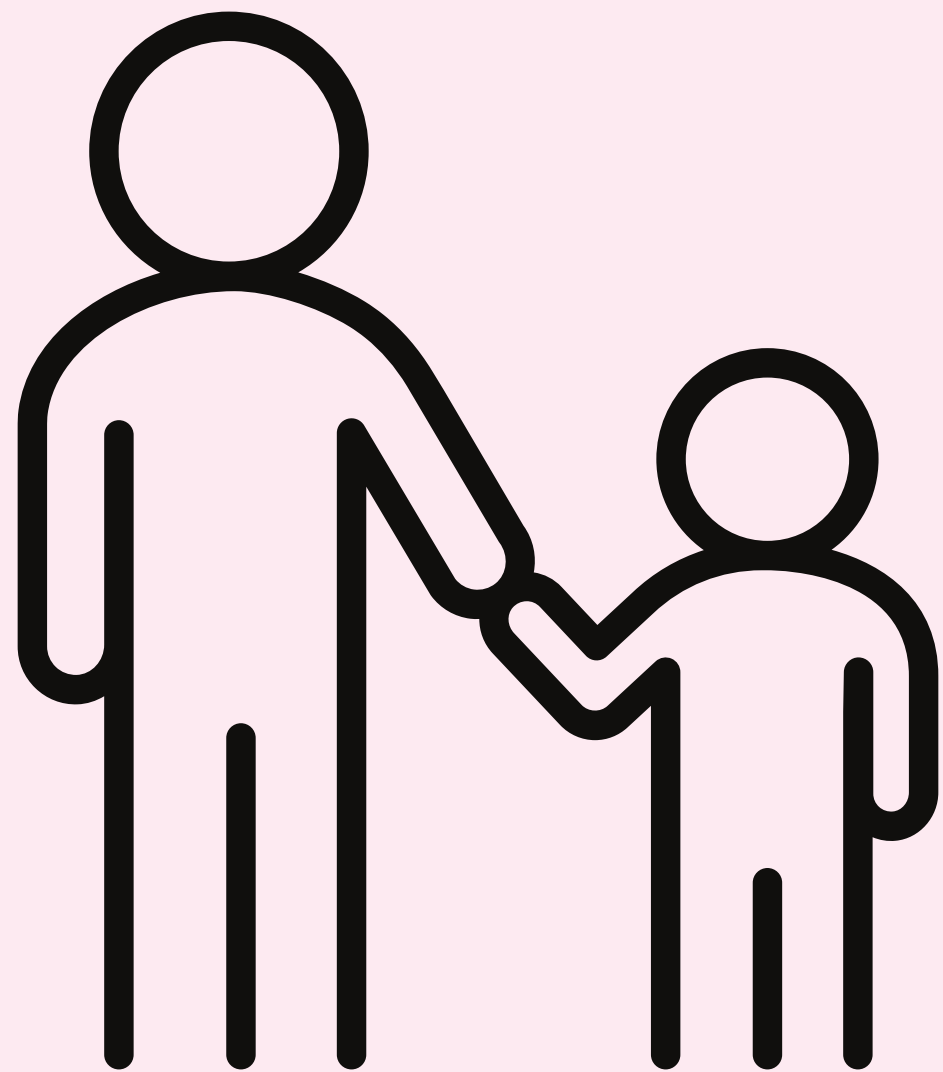
Current Menus

We are regularly updating this page!

<https://www.mylandprimary.co.uk/>

# General Information

- Children are usually dropped off through the main school gates at the 'pupil doors' and walk to their own classrooms independently. Messages for the class teacher can be taken at the door by the member of staff on duty.
- The doors open at 8:40 a.m. and registration closes at 8:50 a.m. Children arriving after this must be signed in as late at the school office.
- Pick up is usually on the school playground at 3:15 p.m.
- School dinners are usually ordered a week in advance online; menus for the first week in September will be available beforehand and the office should be in touch soon to help you set up an Arbor account (if they haven't already!).



# General Information

- Packed lunches need to be clearly labelled with child's name.
- MDAs and Playleaders are here to help your child with lunchtimes – it will be great for your child to get used to carrying their own plates at home and scraping leftovers/using a knife and fork.
- If your child has any allergies that we need to be made aware of, please let us know. We will require a doctor's note.



# General Information

- Snack — children may bring in a healthy fruit or vegetable snack if they would like to. If the snack is grapes, please can these be cut. No nuts, crisps or chocolate, please.
- They also have fruit or vegetables each day from the national schools' scheme.



# Uniform



- White polo shirt/blouse with charcoal grey trousers or skirt and gold school jumper.
- In Summer — school gold dress for girls and charcoal grey shorts for boys.
- Smart black shoes (NOT trainers!).
- PE — school PE kit is available: white t shirt and black shorts with black plimsolls. Plain black tracksuit.

Uniform is now ordered through:  
[yourschoolwear.co.uk](http://yourschoolwear.co.uk)

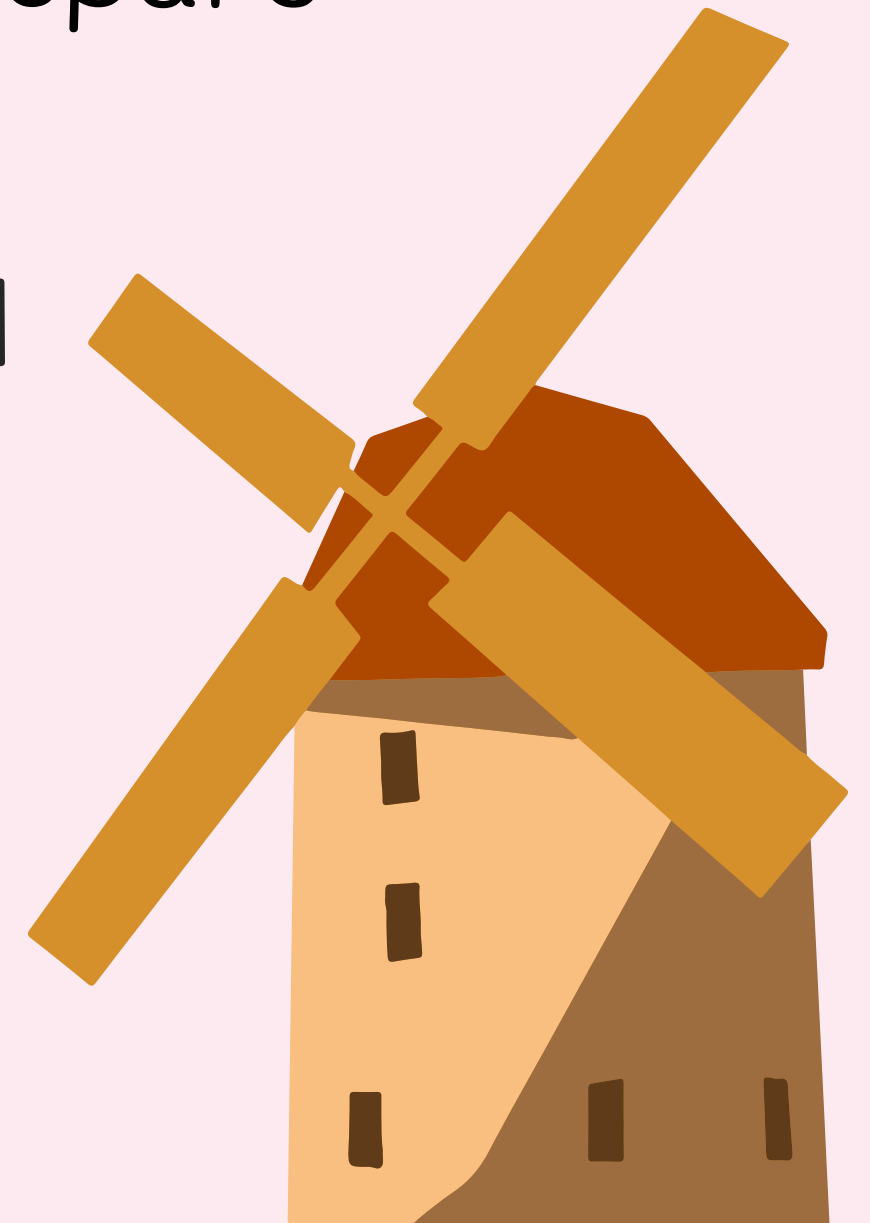
# Uniform Reminder

- Uniform and bags need to be **clearly labelled** with names please! 30 jumpers and 30 t-shirts all look the same when we are getting changed for PE!
- If you have a spare pair of wellies please bring them in (in a named carrier bag) so your child can wear them in the rain and mud.



# First Few Weeks:

- The children will start school on Thursday 3rd September. The arrangements for extended drop off and pick up are as listed in your 'The Story of Myland' booklet. Spare copies are available on request.
- Please TRUST US — if your child is upset, we will help them. The best thing to do is to stay positive and say 'see you after school' ...they WILL settle!



# Still to come...

You can come and see the classrooms during 'At Home' sessions (grown up to stay):

Monday 1<sup>st</sup> June  
Monday 8<sup>th</sup> June  
Monday 22<sup>nd</sup> June  
from 3.30 - 4 p.m.

Settling in session (without grown ups staying) to be signed up for: either 9.30 a.m. - 11.30 a.m. or 12.30 p.m. - 2.30 p.m. on Thursday 25<sup>th</sup> June. Bring a fruit/vegetable snack and a named water bottle.

For the full day (9.30 a.m. to 2.30 p.m. on Monday 6<sup>th</sup> July), children are asked to bring a fruit/vegetable snack, a named water bottle and a packed lunch. They may also need a spare set of clothes if they are not currently confident with getting to the toilet in time!

There will also be a chance to sign up for an individual 'All About Me' meeting on either

Monday 13<sup>th</sup> July or Tuesday 14<sup>th</sup> July.



*Thank you!*